

Sweden

UCEAP Advising Notes



[Berkeley Study Abroad Photo Contest Entries from Sweden](#)

Objective

This document is an advising tool written by a Berkeley Study Abroad (BSA) Adviser to review program specific details that may impact a student's decision to apply for a UCEAP program. The document is not a summary of eligibility requirements, academic, housing, application and other logistical details freely available to students on the UCEAP and BSA website. If any concerns you have are not addressed on the UCEAP website or the Advising Notes document, please contact the BSA Adviser for this program.

Table of Contents

[Summary of Programs](#)

[Student Stories](#)

[Visas](#)

[Lund University](#)

[Students with Disabilities](#)

[LGBTQIA+ Identifying Students](#)

[Working Abroad](#)

[More Resources](#)

Summary of Programs

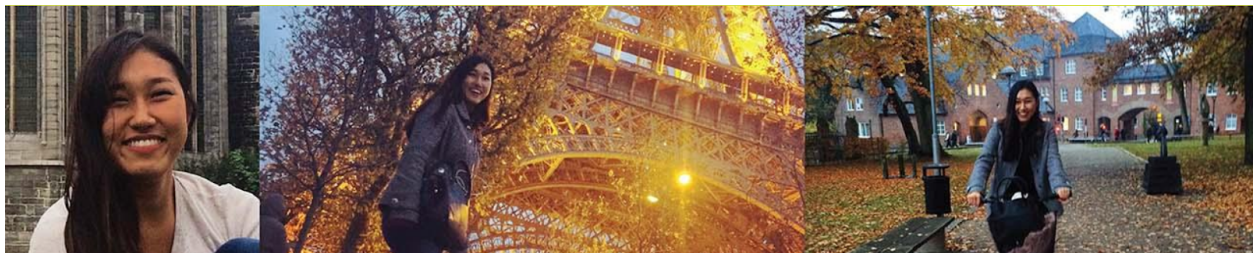
	Summer	Fall	Year	Spring
Lund University		X	X	X

Student Stories

[Berkeley Stories: Lexi Laufer, Fall in Sweden](#)



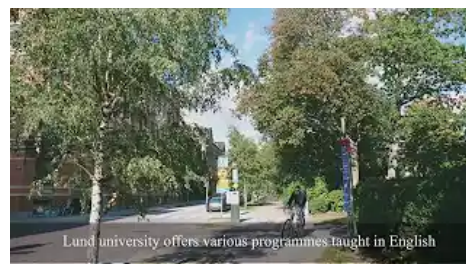
[Berkeley Stories: Ann K, Fall in Sweden](#)



[Berkeley Stories: Hannah R, Spring in Sweden](#)



[3 Minute Travel Guide: Lund, Sweden](#)



[Studying at Lund University as an international student](#)

Visas

US Passport Holders

The Swedish residency permit application can be done online. U.S. citizens can secure biometric data in Malmo, Sweden, after they arrive for the start of their program.

Non US Passport Holders

Non-US passport holders that are from a country that requires a visa are required by the Swedish government to secure biometric data in Washington DC the semester before departure.

Lund University

Academics

Students are required to take a normal load of 30 ECTS credits each semester. Below is the conversion for ECTS and UC credit.

5 ECTS = 2.7 semester UC units
7.5 ECTS = 4 semester UC units
10 ECTS = 5.3 semester UC units
15 ECTS = 8 semester UC units

Students are required to take 3 or 4 courses per semester. One or two courses can be taken during each 8 week block period, which are similar to quarters in the US. Class size is small compared to UCB and faculty are very informal (on a first-name basis) and approachable. Work in class often involves group work with other students and practical application of theory.

Although there is a wide variety of course work offered in English, students should pay particular attention to whether or not subjects have prerequisites or have limited availability. If a course is listed as being taught in Swedish/English, it means the lectures are in Swedish, but sections and reading material are provided in English. If you do not speak Swedish, sign up for courses listed as being taught in English only.

There is a wide variety of Scandinavian Special Area Studies courses that were developed for international study abroad students that are taught in English. Students are asked to choose 4 of these when enrolling, and simultaneously to choose 4 courses in the regular departments. Students will probably end up taking a total of 3-4 courses that include both types of courses. Since SAS courses are just for international students, UCB students are encouraged to take at least 1-2 courses from the regular faculty (department) offerings, in a field the student is majoring or minoring in, in order to interact with Swedish students and department faculty.

Undergraduates can take first year masters level courses. The Swedish academic system consists of three years of undergraduate study followed by two years of graduate study. Undergraduates may be able to take first year Masters courses or “400” courses if they are offered in English, though there are some exceptions. First year Masters courses are similar to upper-division Berkeley courses. Students must meet prerequisites to take such a course.

Housing

UCB students live in dormitories or in off-campus housing. Students make their selections in the housing application. The student can potentially choose to live near the faculties the student will be taking classes in. Sparta international is the international dorm, but other dorms will have a mix of Swedish and international students. Floors or “korridors” contain multiple single rooms all grouped around a common kitchen & common living room area. **There is a sizeable up-front cost for the housing deposit that is required in May or November**, before departure for the program. Students must plan to have a way to pay this before financial aid disburses.

Internships and Research Projects

Internships are something students will look into once they have arrived in Lund and have started the semester. These would be arranged directly between the student and whichever department, professor or entity potentially offers an opportunity. Students can use the help of the Study Center Program Coordinator or the Lund University Career Services to find a good match.

To date we have had a lot of internships/research projects in the sciences, biology and engineering. Fewer students have attempted internships or research in the humanities and social sciences, although a student recently completed a research project with the Political Science Department. A student who is determined to pursue an internship opportunity is typically able to secure one, particularly if they are somewhat flexible.

Student Life

Outside of the dorms, the [Student Nations](#) provide places to gather socially for lunch and dinners each week and to have inexpensive social activities and weekend musical events. Students can also run for office within the club or volunteer as bartenders and in exchange for work receive discounts on meals or drinks.

Lund University offers an [International Mentor Programme](#) to help introduce newly-arrived international students to various student activities and everyday Swedish living. The mentor groups consist of 5-7 mentors (either Swedish or international students who have been studying at Lund University already) and 15–20 new international students. The Mentor Programme is a great way for you to make some new Swedish and international friends.

Lund University also has a wide range of [student associations](#). They are run by students, for students and they revolve around music, drama, 'spex' student theatre, politics, religion and much more.

Program Extension

Extensions from fall to spring are possible in Lund University if you are in good academic standing and meet the GPA requirement for the Fall/Year programs. *You can extend ONLY if you have acquired a Residence Permit for the program you wish to extend to before departure for Sweden.* UCEAP will cooperate with your plans by getting the proper letter from Lund University to apply for the residence permit you need. Indicate your interest in extending by filling out the Departmental Approval to Extend Form in the UCEAP application.

Students with Disabilities

Accessibility to public facilities and transportation in Sweden is good, particularly in newer buildings and the public transportation systems. The government actively implements and funds programs promoting disability access to streets, public buildings, stores, restaurants, and public transportation.

The UC Study Center is on the fourth floor, accessible by a ramp, elevator, and with electronically opening doors. Not all university offices are on the ground floor, although many buildings have ramps and elevators. There are also some classrooms and living quarters that are designed to be accessible.

Lund is relatively flat, but the streets are mostly cobblestone, and stores frequently have steps at their entrances. However, buses, trains, and train stations all have ramps, elevators, or even air-inflatable platforms for individuals in wheelchairs.

Given proper notice, UCEAP will help students with disabilities with note takers, mentors, sign language specialists, and other personal assistants. Contact your Program Specialist immediately to request special accommodations and to make payment arrangements. A letter from the UC Berkeley DSP office is required.

Refer to the [Accessibility Office at Lund University](#) for information about support and services offered.

[Study in Sweden](#) is a comprehensive, official resource on higher education in Sweden for prospective and current international students.

Review how to request disability related accommodations on the [I am a Student with a Disability page](#).

LGBTQIA+ Identifying Students

Threat to safety in the LGBTIQ community is minimal. Societal tolerance ranges from tolerance to acceptance.

[LGBTQ+ Travel in Sweden](#)

[LundaPride](#) is an association that works with LGBTQ(+) rights in Lund. Every year the group organizes LundaPride in May and other events throughout the year that highlight the LGBTQ(+) community

Review [tips and resources for LGBTQIA+ Identifying Students](#).

Working Abroad

Students with a residence permit are allowed to work in Sweden. Past students have worked in the service industry; restaurants, hotels and stores, and also as English language tutors. Students have also worked for The Nations, usually for free food/drinks and/or entrance to events. The Study Center does not assist students with finding employment.

More Resources

[Adventures in Sápmi](#)

Sápmi is the Sámi name for Arctic areas where these indigenous people live. This website is an

[Welcome to Sweden](#)

Welcome to Sweden is an American-Swedish sitcom television series created by comedian Greg Kinnear, about an American accountant who quits his job to move with his girlfriend to her native country of Sweden.